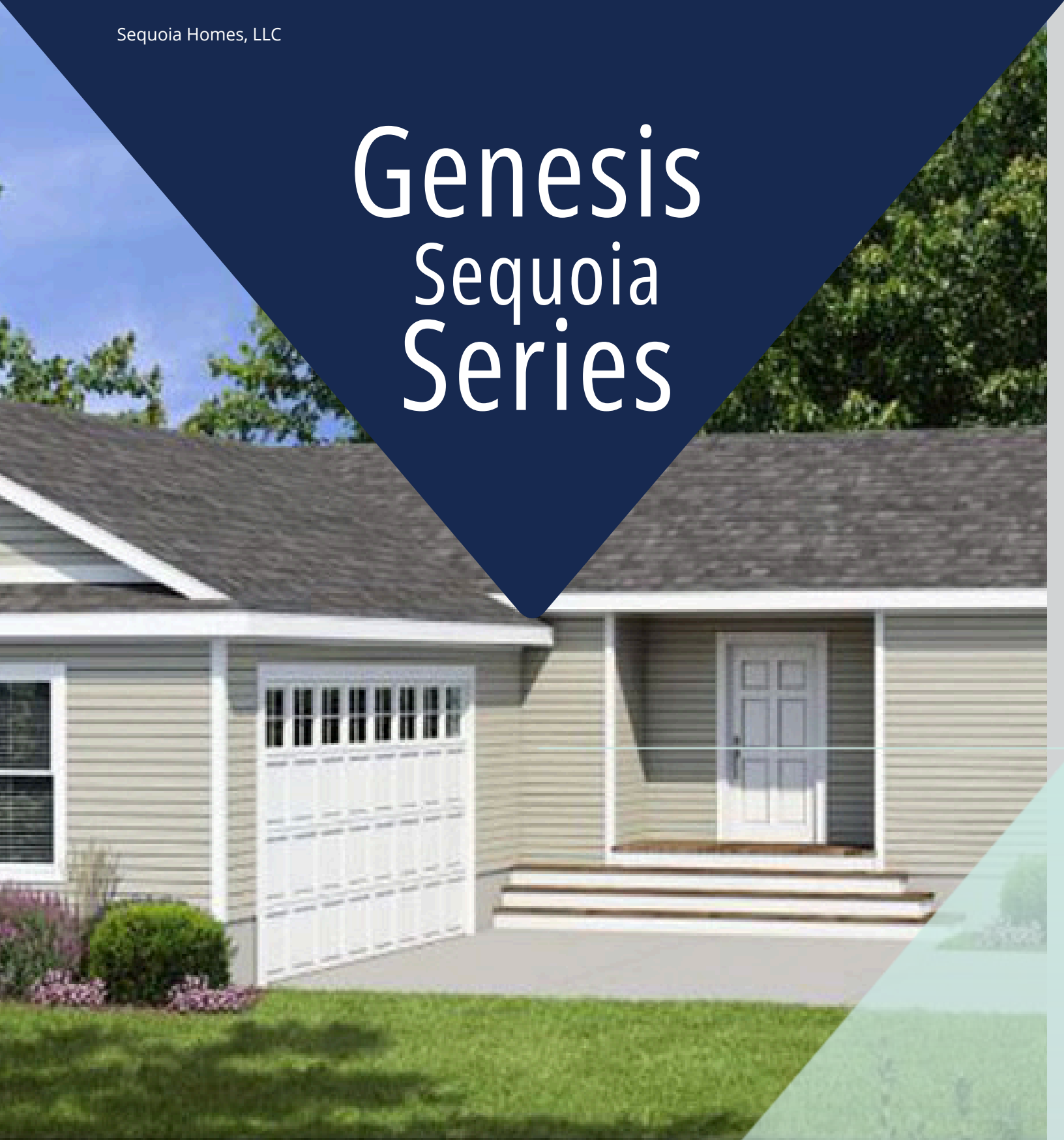


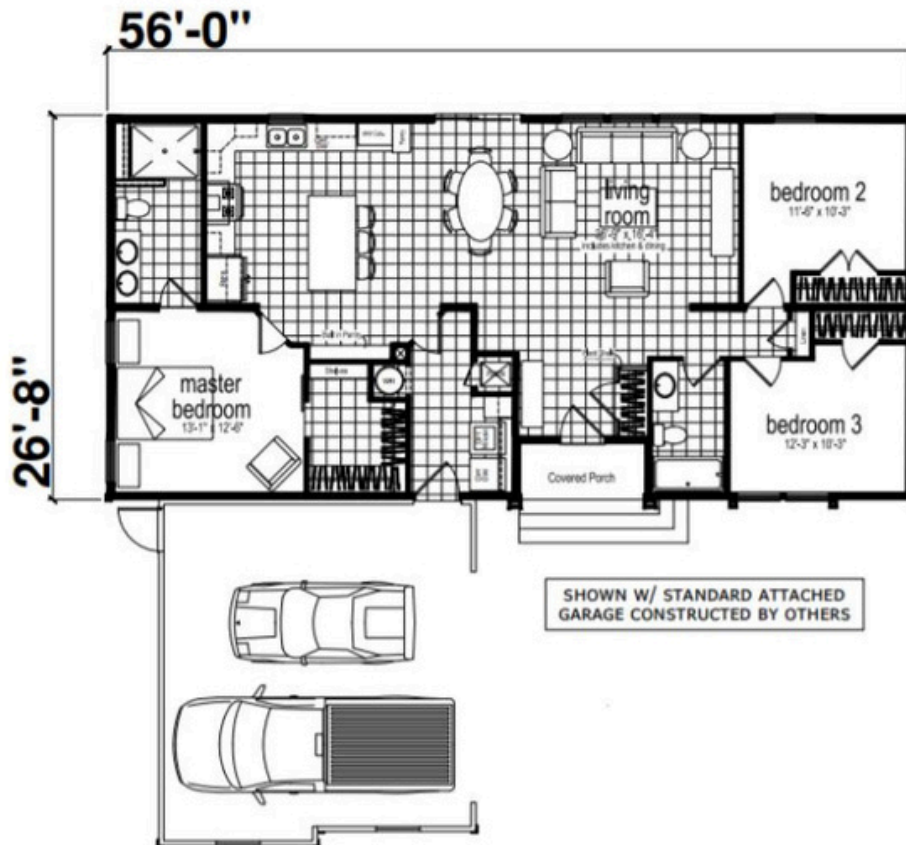
Genesis Sequoia Series



Sequoia

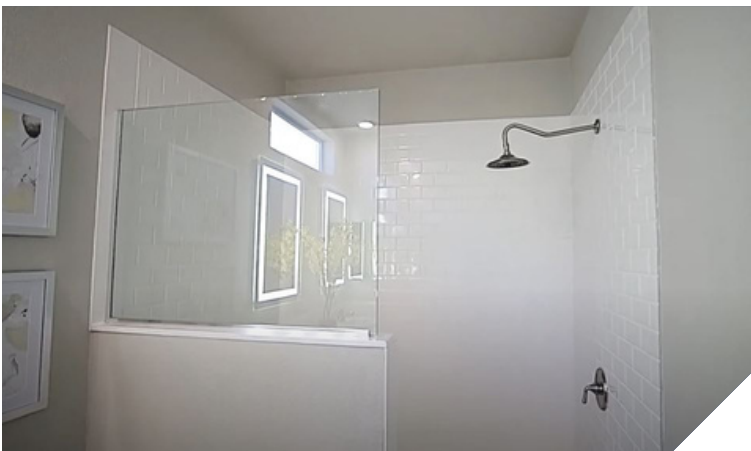
56' x 26'8"
3 bed-2 bath
1459 sq. ft.

Genesis SERIES





Photos reflect optional features



Standard features

****Floor plan specifications and materials are subject to change without notice or obligation.****

Exterior

- Upgrade R33-11-22 Insulation
- 30# Roof Load
- 4:12 Cap Roof Pitch
- 5:12 Hinge Roof Pitch – Optional
- Garage Dormer or Minimum 72 Sq Ft Porch per Plan
- Dual-Glazed Vinyl Framed low-E Windows
- Vertical Cement Fiber Siding
- 6" Window Trim
- 2x10 Facia
- Architectural Roof Shingles
- Foundation Ready
- 5/8" Tongue & Groove OSB Floor Decking
- 2"x4" Exterior Sidewalls
- 8ft 6-Panel Front Door with Deadbolt
- 32" 9-Lite Rear Door
- 12" Front 7 Rear Overhangs & 6" Side Eaves

Interior

- 9' Sidewalls with Flat Ceiling Throughout
- 1/2" Tape & Texture Drywall Throughout
- Hand-Finished Knock-Down Ceiling
- Round Corners at Walls
- Square Corners at Windows
- Crown Molding in living Room, Dining Room, Kitchen & Hallway
- Upgrade Low Sheen Interior Paint
- Hardwood Cabinets with Hidden Hinges, White Lining and Adjustable Overhead Shelves
- 2-Panel Interior Doors with Mortised Nickel Hinges
- Single Lever Door Handles
- 36" Wide Bedroom Passage Doors per Plan
- Oversized 42" Wide Hallway
- Double Wardrobe Shelves in Master Bedroom
- Walk-In Closet per Plan
- Upgrade 3 ¼" Residential Base Board Molding
- Upgrade Dining Room Chandelier
- 25oz Upgrade Carpet and ½" Carpet Pad
- No-Wax Vinyl Floor Covering in Kitchen, Dining Room, Baths & Utility
- 2" Faux Wood Blinds with Faux Wood Valance
- Full Extension Ball Bearing Drawer Guides
- Wood Shelves and Poles in all Closets
- By-Pass Wardrobe Doors per Plan

Kitchen

- 42" Tall Hardwood Overhead Cabinets
- 3/4" Adjustable Overhead and Base Cabinet Shelves
- Whirlpool® Brand Name Appliances (Black or White)
- 25 Cu Ft Frost-Free Refrigerator
- 30" Self-Clean Gas Range with Electronic Ignition, Window, Clock & Timer
- Range Hood Vent
- Stainless Steel Sink
- High Arch Single Lever Faucet w/Pull-Out Sprayer
- Laminate Countertop with Crescent Edge
- 6" Subway Tile Backsplash
- Drawer-Over-Door Cabinet Construction
- Deep Cabinet over Refrigerator
- Large Gourmet Kitchen Island per Plan
- 4" LED Recessed Can Lights per Plan
- Pendant Lights over Island per Plan

Baths

- 60" Fiberglass Walk-In Shower with Enclosure Master Bath
- 60" 1-Piece Fiberglass Tub/Shower Hall Bath
- 36" High Countertop in Both Baths
- 3-Door Linen & Drawer Bank in the Master Bath
- Dual Sinks in Master Bath per Plan
- Towel Ring & Bar in Master Bath
- Towel Bar in Hall Bath
- Single Lever Nickel Sink Faucets
- Single Lever Nickel Shower and Tub Shower Faucets
- Dual China Sink with Overflow & Pop-Up Drain
- Elongated Water-Saver Commode
- Vanity Strip Light & Exhaust Fan with Light
- Beveled Medicine Cabinet Both Baths
- Vanity Mirrors with Beveled Edge
- Laminate Countertop with Crescent Edge
- 6" Subway Tile Backsplash
- Ventilated Window per Plan

Utility, Safety & Energy

- Toe-Kick Registers in Kitchen & Baths
- 100 AMP Exterior Electrical Panel Box
- 40-Gallon Gas Water Heater
- Smoke Detectors with Battery Back-Up
- 56,000 BTU Gas Furnace
- Door Over Furnace Compartment
- Plumbed for Washing Machine & Gas Dryer
- Recessed Dryer Vent Box
- Metal Shut-Off Valves Throughout
- Exterior Light at Front & Rear Doors
- Rocker-Type Light Switches
- Three-Way Light Switch in Hall & Utility per Plan
- G.F.I. Protected Outlets in the Kitchen & Baths

Silvercrest[®] 

299 N. Smith Avenue
Corona, CA 92880
silvercrest.com

Dealer
Sequoia Homes, LLC
(858) 429-5683

CHAMPION[®]

MANUFACTURED BEAUTIFULLY[™]